

Valve Adapter

IX-B Series Manual Air Valve + Multifunction Valve



Smaller IX-B size pumps can utilize the function of the Manual Air Vent valve or the MultiFunction Valve with the use of an IX-B Valve Adapter. The Valve Adapter simply replaces the tubing connection or NPT connection on the discharge side of the pump and once installed, either a Manual Air Vent Valve or the MultiFunction Valve can be attached.

The Manual Air Vent Valve enables the pump discharge to be vented to open atmosphere for initial and re-priming, venting trapped pressure, and draining the discharge line safely with tubing installations.

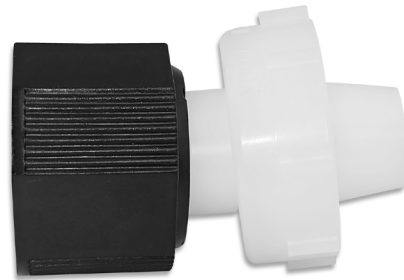
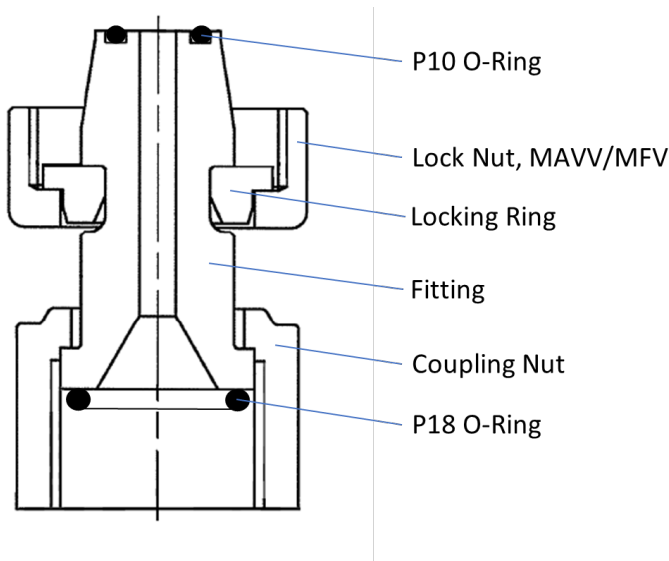
The MultiFunction Valve has all the features of the manual air vent valve with the addition of back pressure as well as a preset safety pressure relief function. Small spring-loaded diaphragms are used to create the back pressure and the pressure relief features while knobs allow the pressure to be released and the pump to be primed or drained.

W A L C H E M

IWAKI America Inc.

IX9909-TC PVDF Fitting & Lock Nut / FKM O-Rings / UHMW-PE lock ring (non-wetted)

IX9909-TE PVDF Fitting & Lock Nut / EPDM O-Rings / UHMW-PE lock ring (non-wetted)



IX-B Pump and Valve Combinations

Valve Adapter/Manual Air Vent Valve Combination

MODEL	TC	TE	TUBING SIZE
IX-B007	IX9010	IX9011	3/8"OD x 1/4"ID
IX-B015			
IX-B030	IX9012	IX9013	1/2"OD x 3/8"ID
IX-B045			

Valve Adapter and Multifunction Valve (purchase two separate parts)

MODEL	TC ADAPTER	TE ADAPTER		MFV	NOTES	TUBING SIZE
IX-B007	IX9909-TC	IX9909-TE	&	MFV-HTC-7	1	3/8"OD x 1/4"ID
IX-B015				MFV-MTC-7	2	
IX-B030				MFV-MTC-8	3	1/2"OD x 3/8"ID
IX-B045				MFV-MTC-8	4	

NOTES:

1. Only rated to 150PSI operation with MAVV or MFV
2. For pressures <75PSI. Use MFV-HTC-7 for pressures >75PSI
3. MFV-MTC-8 only rated to ~75 PSI operation.
4. Pressure Relief set too high in MFV. Requires separate PR valve.



ISO 9001 registered company

180960 A Oct 2023

Walchem, Iwaki America Inc.

Five Boynton Road Hopping Brook Park | Holliston, MA 01746 USA | Phone 508-429-1110 | walchem.com